



VACANT
EMMA GIBSON



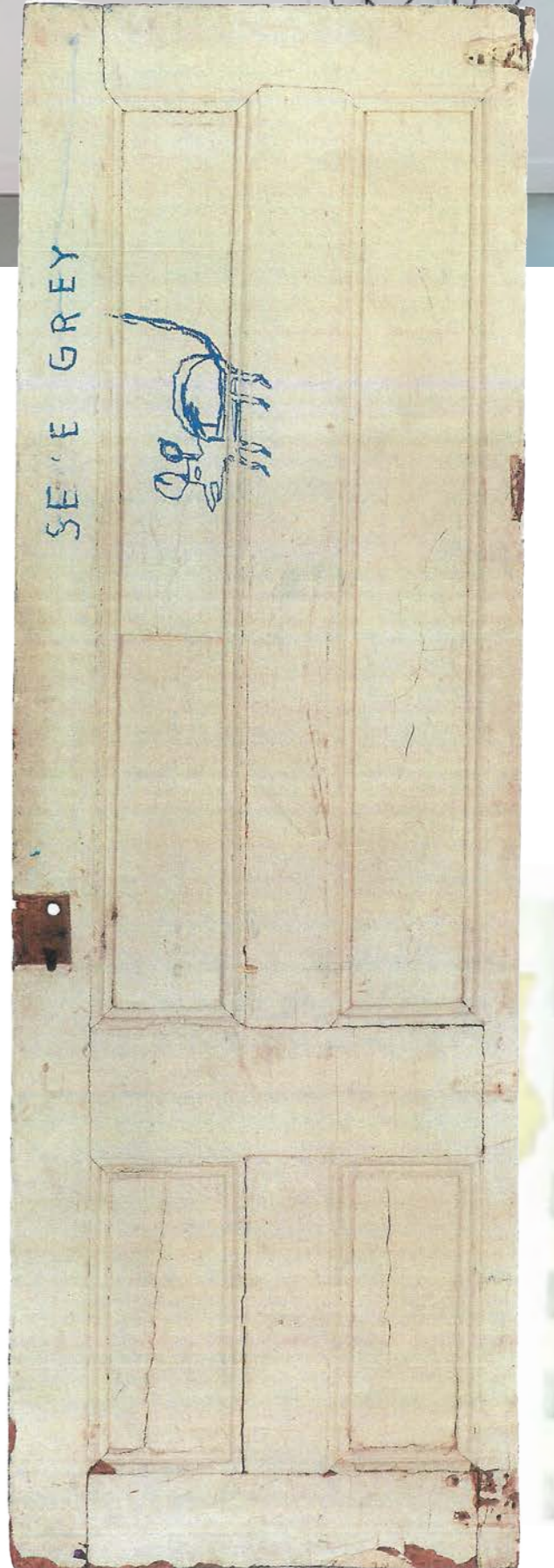
KOLMANSKOP -
NAMIBIA



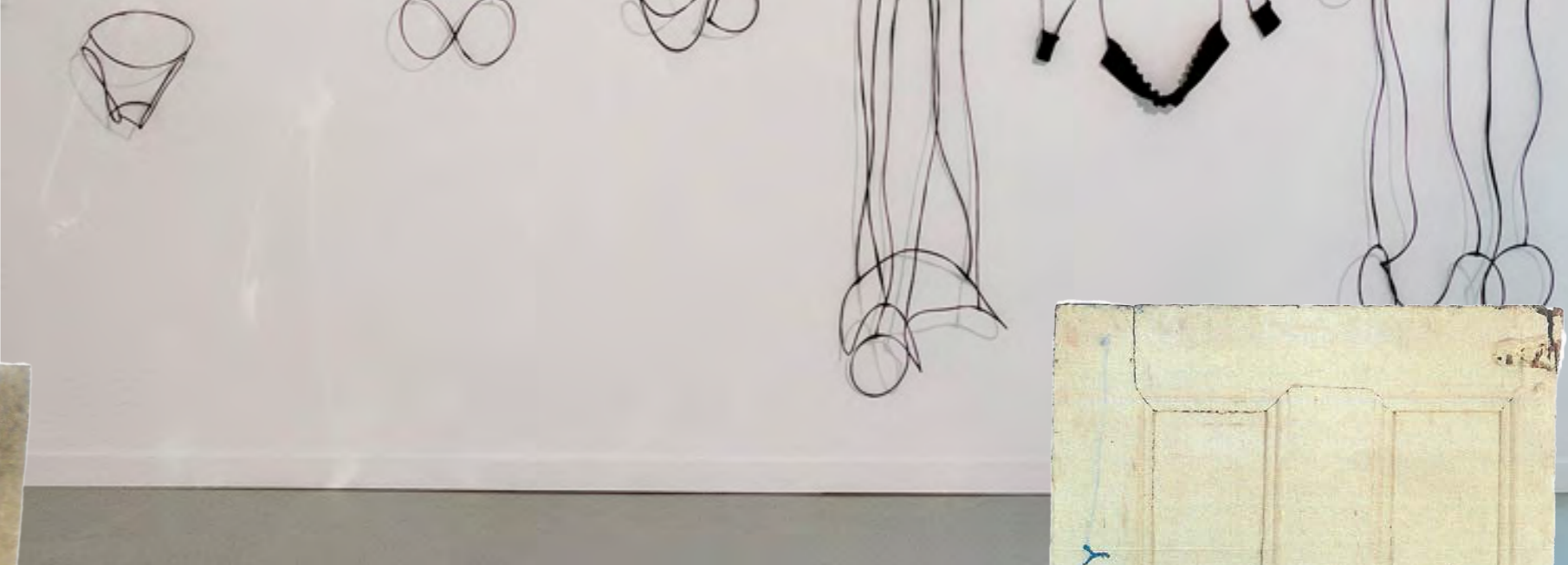
MARION BARUCH



CORINNE DAY



JEAN-MICHEL BASQUIAT



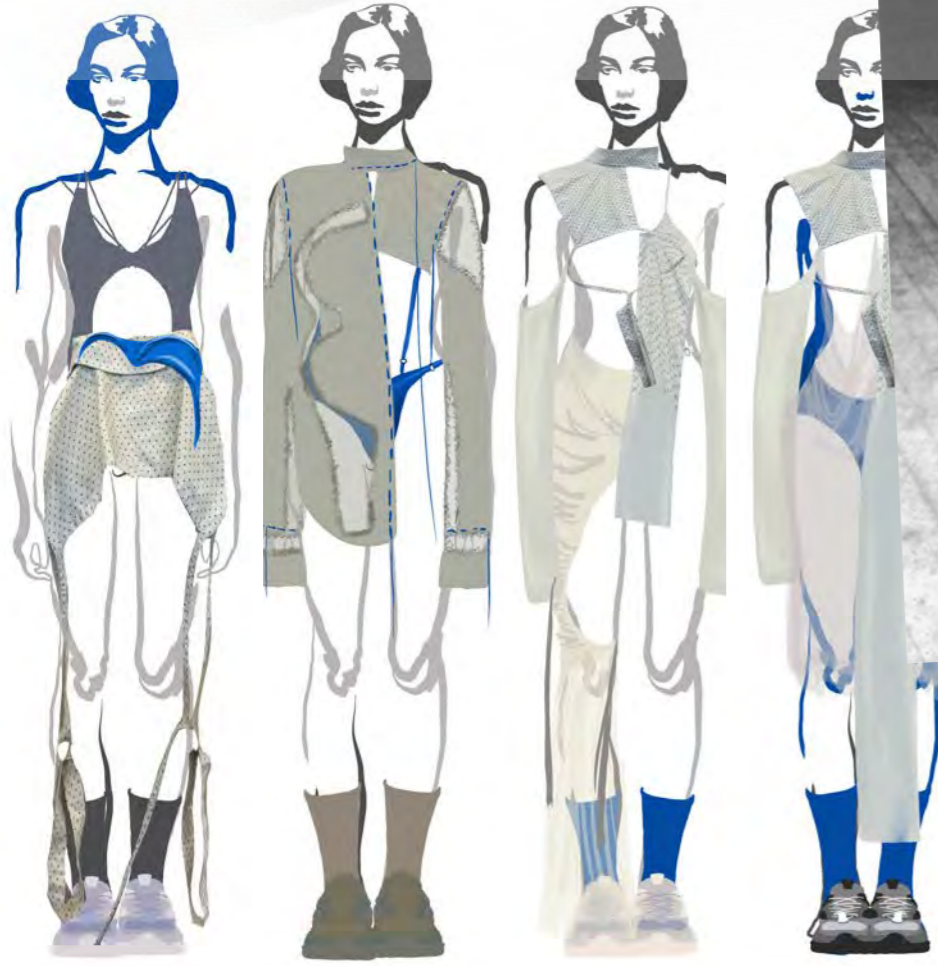


CUT OUT BRA SHAPE WITH MESH BEHIND

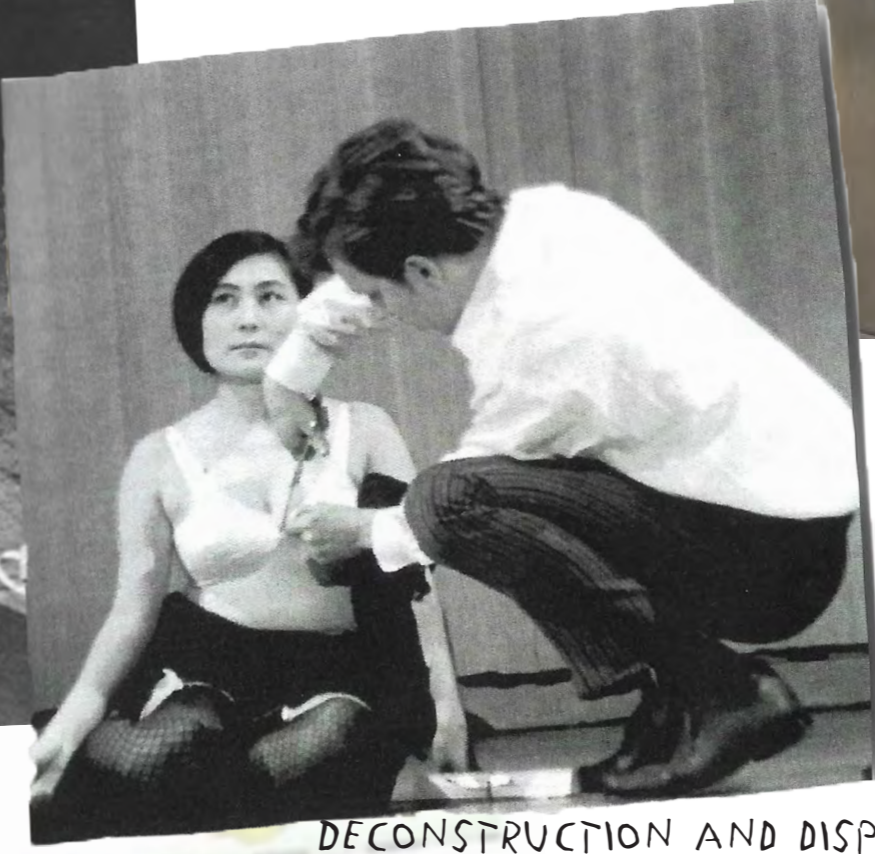


SHIRT AS FACING WITH FABRIC DRAPING FROM BRA





YOKO ONO, CUT PIECE



DECONSTRUCTION AND DISPLACEMENT OF 'WORK WEAR' SHIRTS. USING A PLAIN SHORT SLEEVED SHIRT AND REMOVING ALL FABRIC EXCEPT THE SEAMS - RECONFIGURING THIS ON THE STAND.



STAND WORK USING A MENS PAIR OF WORK-WEAR TROUSERS AND A DECONSTRUCTED BRA, WITH ALL THE FUNCTIONALITY TAKEN OUT.



BUNCHED UP CLOTHING - USE OTHER ITEMS/GARMENTS TO HELP.

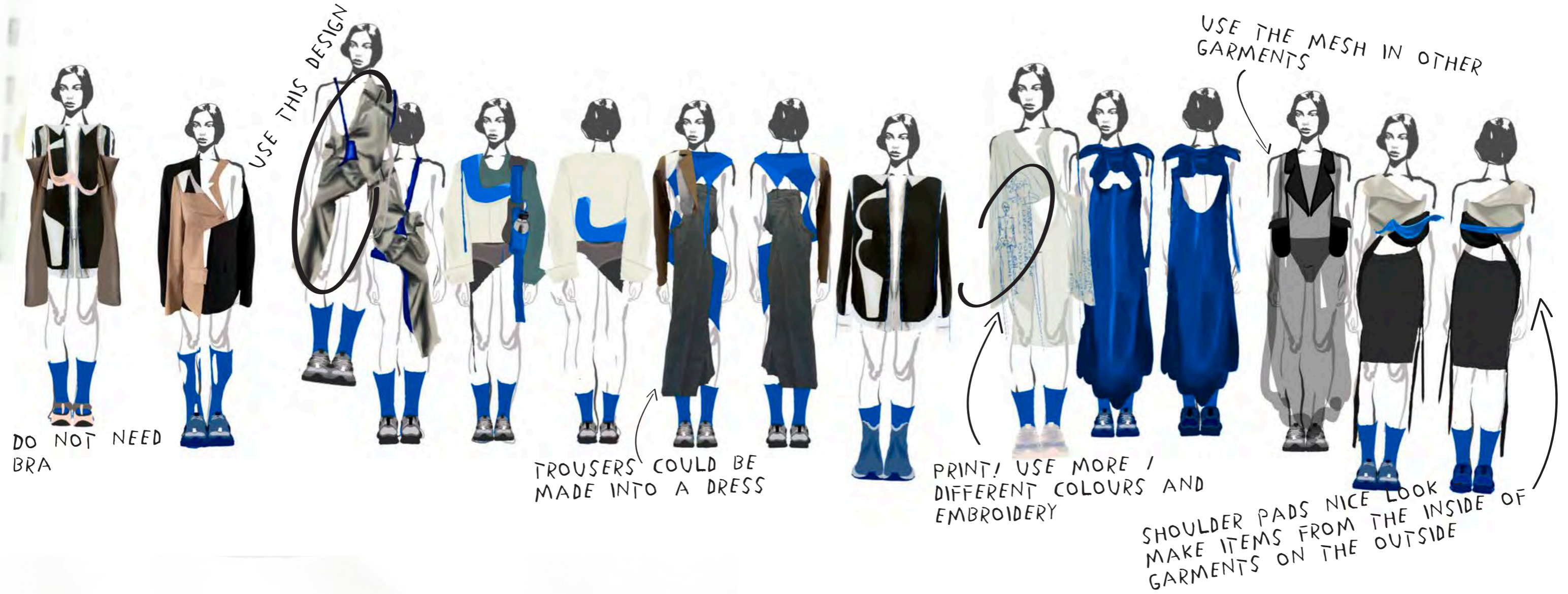
INSIDE OUT TROUSERS - COULD BE MADE INTO A COAT? USING THE FLY, WAISTBAND AND POCKETS AS DETAILING.

JURGEN TELLER GO - SEES

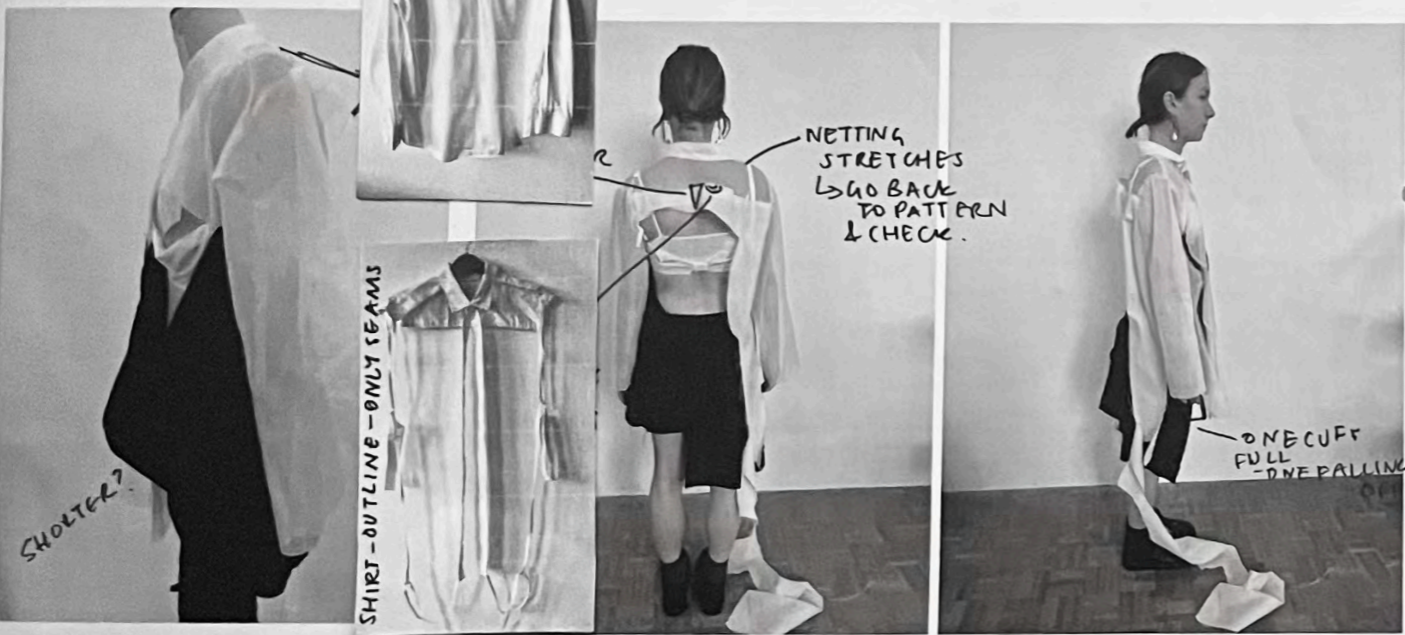
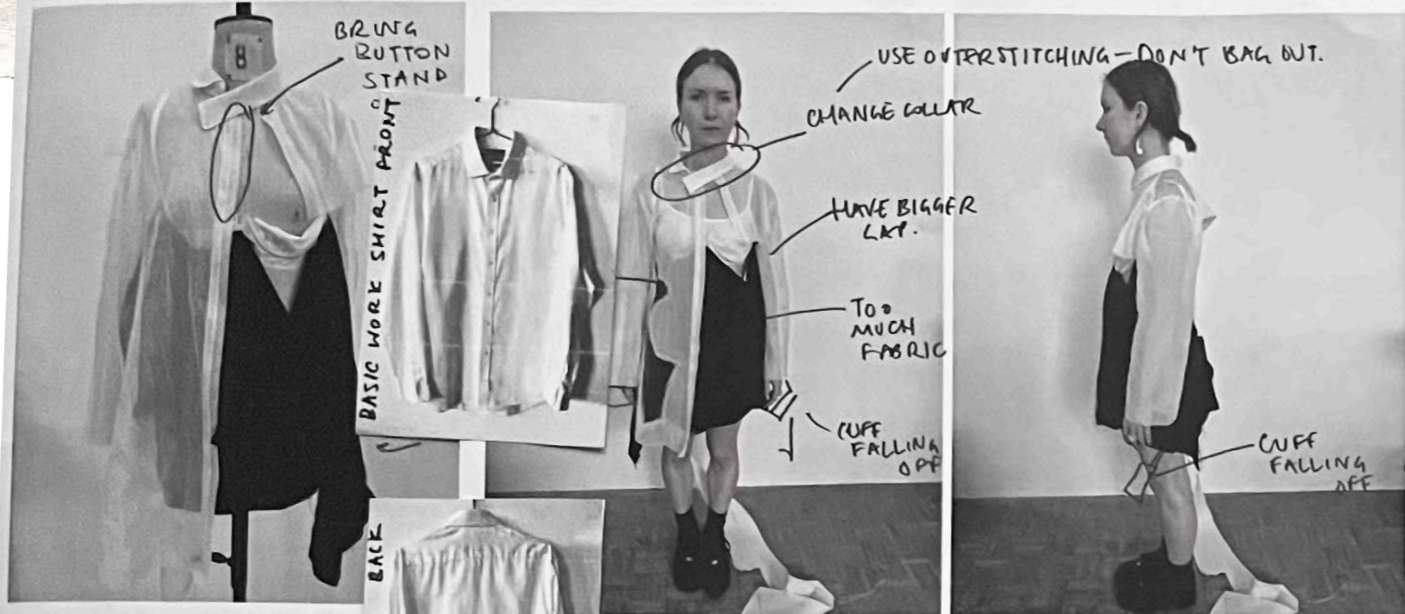


29th September 1998
Domenique

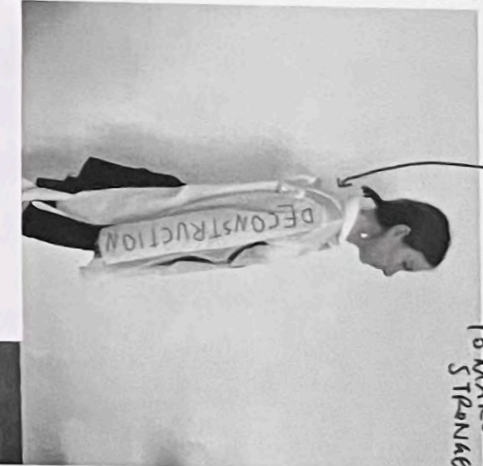
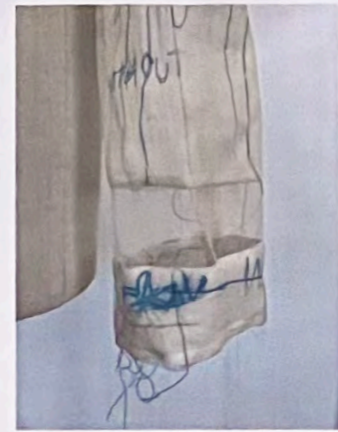
INITIAL DESIGNS



LOOK 3 - DEVELOPMENT

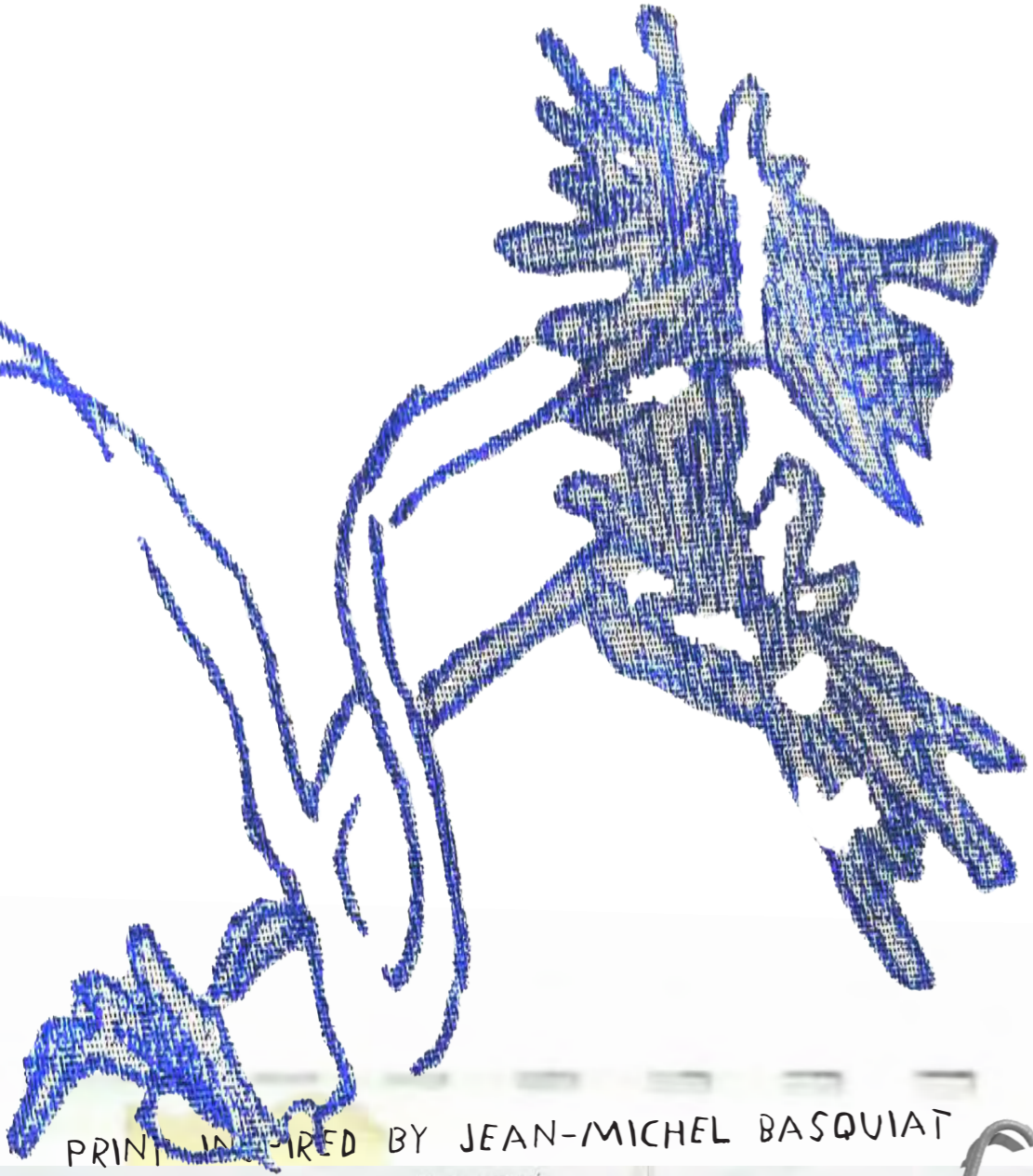


SHIRT DETAILS WITHOUT EMBROIDERY



COLDED INTO -

LOOK 3 - PRINT DEVELOPMENT



PRINT INSPIRED BY JEAN-MICHEL BASQUIAT

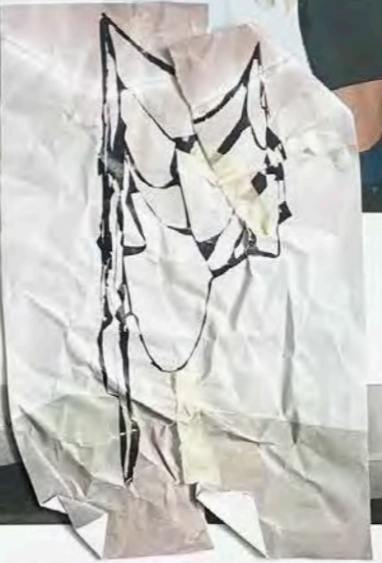
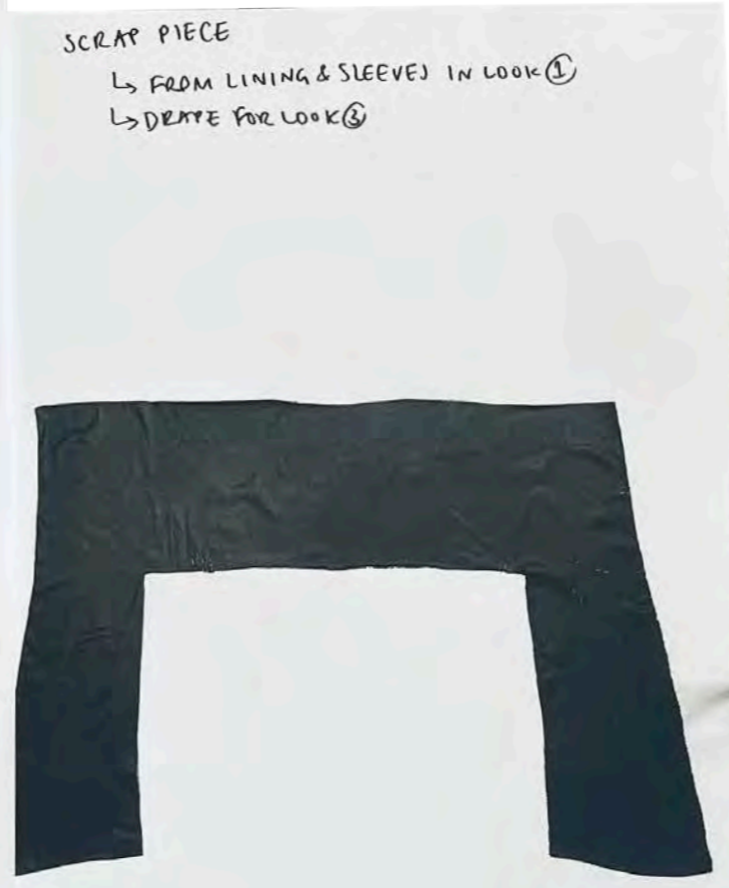
Jean-Michel Basquiat

Printed, 1986
Acrylic and oil stick on wood
11 x 9 1/4 x 9 1/4 in.
(27.94 x 23.16 x 23.16 cm)



USING MONOPRINT, EMBROIDERY AND PEN

LOOK 3 - DEVELOPMENT



VACANT S/S24

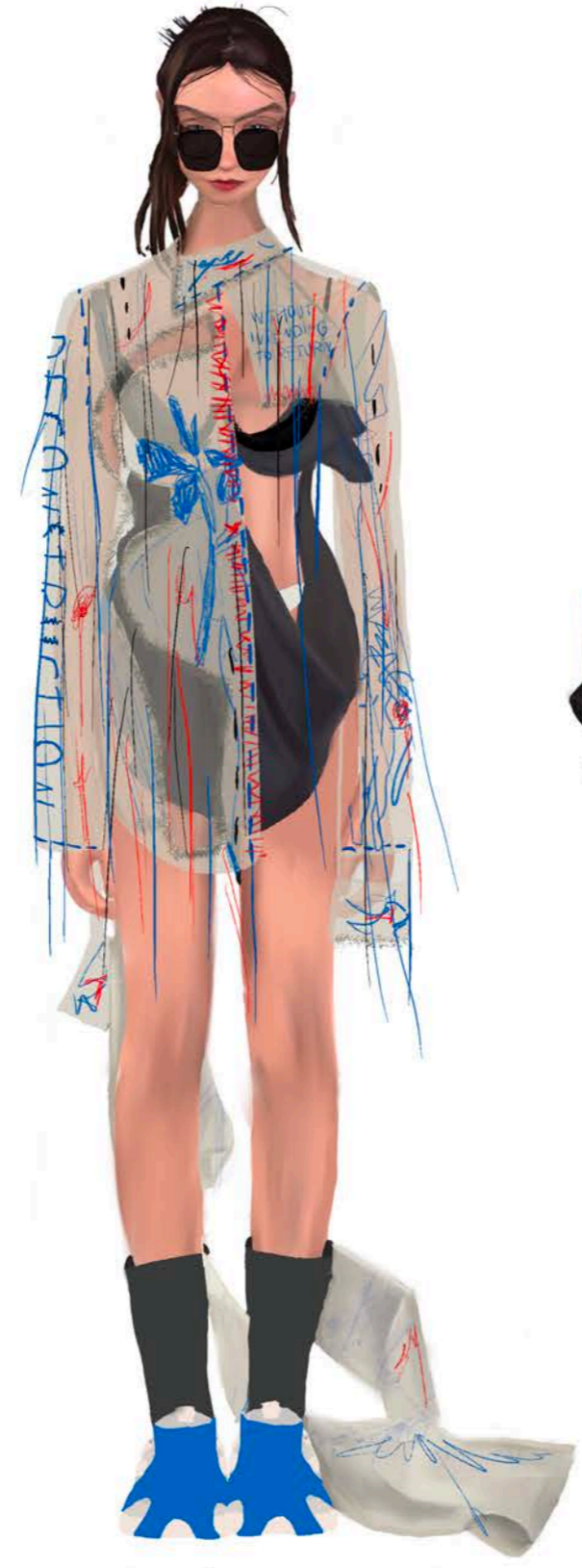
①



②



③



④

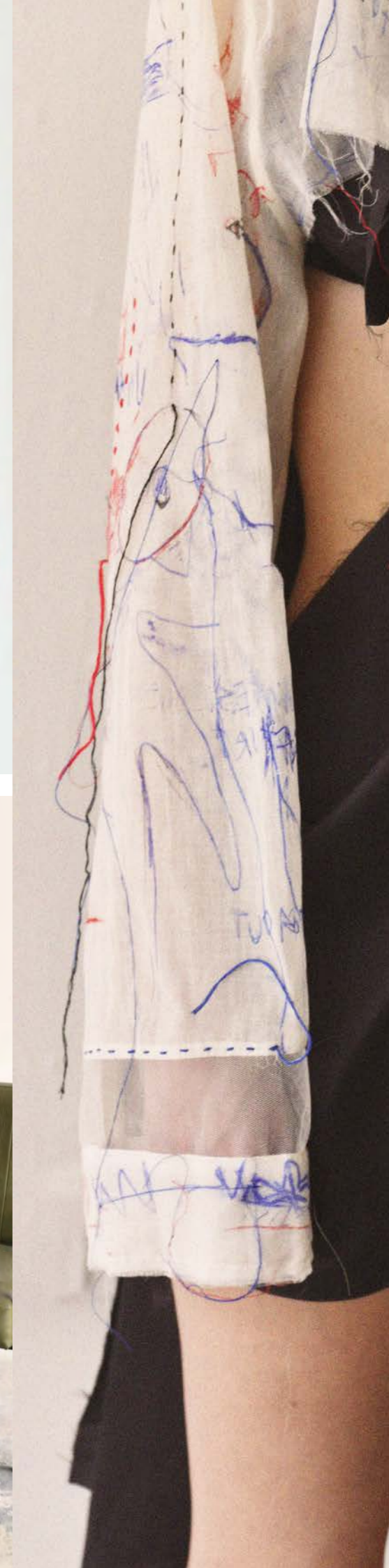
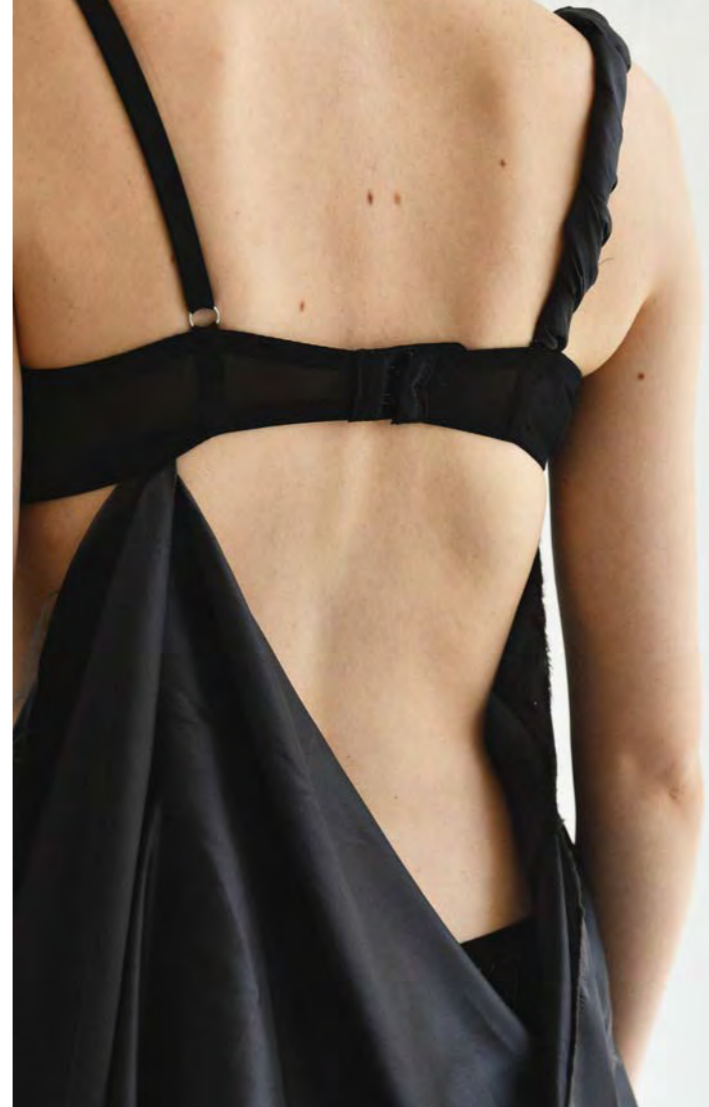


⑤



⑥









VACANT ACCESSORIES SIS24 MINI PROJECT

ADAPTING / RE WORKING TRAINERS. USING A VARIETY OF
CLEATS, WEBBING AND RIBBONS. BRINGING IN THE ACCENT BLUE
COLOUR.



IMPROVISATION AND RANDOMNESS
THROUGH DESIGN. FOLLOW ON PROJECT
BASED ON AN ODD ASSEMBLY OF
OBJECTS TO CREATE ACCESSORIES.



A BOOK AND CUTLERLY ASSEMBLED TO CREATE AN
UNCONVENTIONAL 'BAG'



VACANT
ACCESSORIES S1S24
MINI PROJECT

SPoon EARRING - TRANSFORMING AN EVERYDAY OBJECTS
PURPOSE



TRANSFORMING BASIC GLASSES. USING DECONSTRUCTION,
DISPLACEMENT AND UNCONVENTIONAL OBJECTS.

